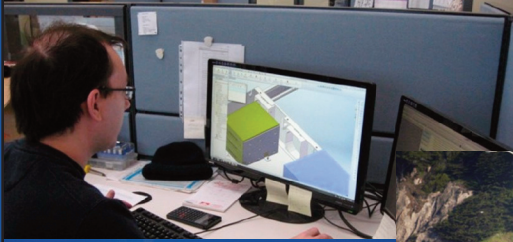


2024 PROGRAM CATALOG



2024 PROGRAM CATALOG



IPSI
International Public Safety Institute
P.O. Box 683
Center Harbor, NH 03226
603.212.8911
www.ipsinh.org

Launched on Open Standards.

The bedrock of Public Safety Certification is a known, quantifiable standard met in a measurable process. IPSI is building Public Safety Certifications on Open Standards that are widely known, broadly contributed to, and internationally relied upon to meet known standards. This foundation sets a straight line to determine and implement reliable knowledge transfer as departments change and grow.

When you're IPSI Certified, everyone knows.

Leveraging Today's Technologies.

The creation of new technology has never occurred at the speed we witness today. The breadth and depth of technology innovation will continue at an increased pace. Every segment of the economy balances risk, proximity, and the adoption rate of new technology with quality, benefits, capabilities, and cost. IPSI experience and expertise delivers that balance, leveraging existing and emerging technologies while constantly evaluating and preparing YOU for what's next.

When you're IPSI Certified, everyone knows.

Combined with Best Practices.

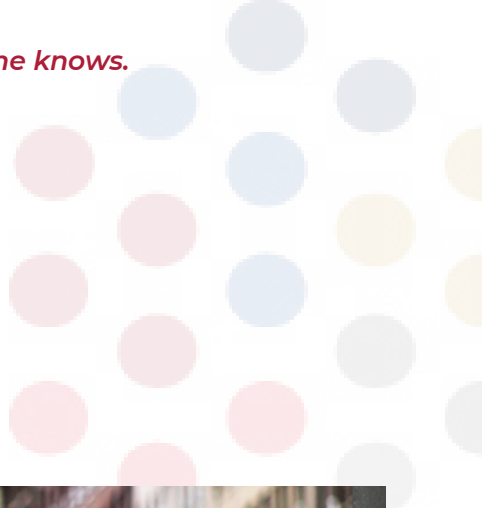
Best Practices are built and advocated by various stakeholders in the public safety ecosystem. Public safety practitioners, manufacturers, and many others contribute to and establish practices known nationwide and internationally.

When you're IPSI Certified, everyone knows.

Making Safety Standard.

IPSI provides a solid process to deliver Public Safety learning and credentials. IPSI Certifications are based on open standards, widely known and broadly relied upon. IPSI combines existing and emerging technologies, always setting a path balancing technology risk and rewards. IPSI ensures best practices are implemented in every step of the certification process. IPSI combines Open Standards, Technology, and Best Practices to Make Safety Standard.

When you're IPSI Certified, everyone knows.



IPSI offers the following programs:

Traffic Signal & Inspection

Traffic Signal Technician Level I	7
Traffic Signal Field Technician Level II	8
Traffic Signal Bench Technician Level II	9
Traffic Signal Construction Technician Level II	10
Traffic Signal Design/Engineering Technician Level II.....	11
Traffic Signal Senior Bench Technician Level III	13
Traffic Signal Senior Field Technician Level III.....	14
Traffic Signal Inspector	15
Traffic Signal Inspector For Advanced Technologies.....	16
Electronics In Traffic Signal Technician.....	17
Microprocessors In Traffic Signals Technician.....	18

Fire Alarm

Interior Fire Alarm Technician Level I	20
Interior Fire Alarm Technician Level II	21
Public Emergency Alarm Reporting Systems Technician Level I	22
Public Emergency Alarm Reporting Systems Technician Level II	23
Fire Alarm Monitoring Technician.....	25

Work Zone Safety

Work Zone Temporary Traffic Control Technician	26
Michigan Temporary Traffic Control Technician	27
Canadian Work Zone Traffic Control Safety	28

Transportation Center

Transportation Center System Specialist Level I.....	30
Transportation Center System Specialist Level II.....	31

Roadway Lighting

Roadway Lighting Technician Level I.....	33
Roadway Lighting Technician Level II.....	34

Signs & Pavement Markings

Signs and Pavement Markings Technician Level I	36
Signs Technician Level II	37
Pavement Markings Technician Level II	39
Pavement Markings Senior Technician Level III	40
Signs Senior Technician Level III	41

Educational Methodology

Educational Methodology.....	43
------------------------------	----

All certification manuals and program titles listed in this catalog are subject to Copyright Law and to the copyright and intellectual property rights of IMSA Educational Foundation. All Rights Reserved by IMSA Educational Foundation.

Reproduction and/or use of the certification manuals, exams, program titles or any part of the content of certification programs listed in this catalog, including reproduction in translation and reproduction in any other medium, without the express permission of IMSA Educational Foundation is unlawful. Unauthorized copying, reproduction, distribution, use in a derivative or collective work, performance, or display of this work anywhere in the world is an infringement of the exclusive rights of the copyright owner and subject to civil and criminal remedies. Permission must be granted in advance and in writing by the copyright owner, IMSA Educational Foundation, P.O. Box 146, Center Harbor, NH 03226-0146, 603.253.3040, info@imsaef.org

TRAFFIC SIGNAL & INSPECTION

IPSI offers certification review programs to prepare you for the certification examinations for Traffic Signal Technician Level I, Traffic Signal Technician Field Level II, Traffic Signal Technician Bench Level II, Traffic Signal Technician Construction Level II, and Traffic Signal Technician Design/Engineering Level II.

TRAFFIC SIGNAL TECHNICIAN LEVEL I



This certification program includes the basics of Traffic Signal Design, Maintenance, Operation, Primary Electrical Details of Cabinet Wiring and Components, Methods and Materials of Signal System Construction, and Legal Issues. This program provides the student with a review of the knowledge necessary to prepare for the certification examination.



QUICK TAKE

Traffic Signal Level I certification indicates the holder is familiar with the concepts and terminology associated with signalized traffic control devices and systems.

OFFERINGS

IPSI Full Program includes: Instructor, Classes, Exam, and Certification. We also have offerings for a Challenge Exam, Continuing Education, and Technical Seminars, as well as Transfer equivalent Certifications.

CERTIFICATION PROGRAM DETAILS

Traffic Signal Level I certification indicates the holder is familiar with the concepts and terminology associated with signalized traffic control devices and systems. The content is designed for the entry-level technician who has had some prior training or experience in electrical technology. Worksite safety is a primary skill area, having been covered in Work Zone Temporary Traffic Control and in this seminar. Principles of operation and primary electrical details of cabinet wiring and components will be intro-

duced. Equipment, methods, and materials for signal system construction will be reviewed, as well as the basics of traffic signal design, maintenance, and legal issues. With proper supervision, this certification holder will be prepared to make a contribution on any traffic signal crew, whether involved in construction, maintenance or design preparation. This certification will also provide the required background information, allowing the technician to learn the material presented in the four Level II certification programs.

PREREQUISITES

- Work Zone Temporary Traffic Control Certification

TRAFFIC SIGNAL FIELD TECHNICIAN LEVEL II



The Traffic Signal Field Technician Level II certification program includes Traffic Signal Design, Maintenance, Operation and Primary Electrical Details of Cabinet Wiring and Components, Methods and Materials of Signal System Construction, and Legal Issues. This program provides the student with a review of the knowledge necessary to prepare for the certification examination.



QUICK TAKE

The Traffic Signal Field Technician Level II certification signifies the holder has a balanced background in the traffic signal technology from seminar work and experience.

OFFERINGS

IPSI Full Program includes: Instructor, Classes, Exam, and Certification. We also have offerings for a Challenge Exam, Continuing Education, and Technical Seminars, as well as Transfer equivalent Certifications.

CERTIFICATION PROGRAM DETAILS

The Traffic Signal Field Technician Level II certification signifies the holder has a balanced background in the traffic signal tech-

nology from seminar work and experience. The Level II Field certification gives the technician additional training in traffic signal control system troubleshooting, on-site repairs and maintenance methods, and equipment. Areas of training will include worksite safety, maintenance of traffic signals, traffic signal system equipment standards and operation, installation inspection, troubleshooting, equipment repair, replacement and programming, test equipment, signal phasing and timing, detection, system communications, preventive maintenance, and documentation. The certification holder will be prepared to make a substantial contribution to the maintenance and repair of signalized intersections, whether employed by a private firm or a public agency.

PREREQUISITES

- Work Zone Temporary Traffic Control Certification
- Traffic Signal Technician Level I Certification
- Two years experience in the traffic signal field

TRAFFIC SIGNAL BENCH TECHNICIAN LEVEL II



The certification program builds on the Level I program including System Programming, Applications, Maintenance of Controllers, Conflict Monitors, Vehicle and Pedestrian Detection Systems, Communication and Power Wiring, Electronic Circuit Operation and Fault Diagnosis, and the Use of Test Equipment in the Control Cabinet. This program provides the student with a review of the knowledge necessary to prepare for the certification examination.



QUICK TAKE

The Traffic Signal Bench Technician Level II certification indicates the holder has a well-rounded background in traffic signal technology from seminar work and experience.

OFFERINGS

IPSI Full Program includes: Instructor, Classes, Exam, and Certification. We also have offerings for a Challenge Exam,

Continuing Education, and Technical Seminars, as well as Transfer equivalent Certifications.

CERTIFICATION PROGRAM DETAILS

The Traffic Signal Bench Technician Level II certification indicates the holder has a well-rounded background in traffic signal technology from seminar work and experience. The Traffic Signal Bench Level II certification technician will have additional training on traffic signal control cabinet equipment. This training includes the programming, application and maintenance of controllers, conflict monitors, vehicle and pedestrian detection systems, and communication and power wiring of the cabinet. The technician will also be trained in electronic circuit operation and fault diagnosis, and the use of test equipment for diagnosis, and certification of control cabinet equipment. The certification holder will be prepared to make a substantial contribution to the signal maintenance operation of either a private firm or a public agency by preparing signal cabinets for deployment and/or troubleshooting and repairing cabinet components in the field.

PREREQUISITES

- Work Zone Temporary Traffic Control Certification
- Traffic Signal Technician Level I Certification
- Two years experience in the traffic signal field

TRAFFIC SIGNAL CONSTRUCTION TECHNICIAN LEVEL II



The Traffic Signal Construction Technician Level II certification program includes information on Safe Operation of Construction Equipment

(from concrete saws to cranes), Planning Activities, Documentation, Installation of Conduits, Poles, Mast Arms, Signal Heads, Cabinets, Inductive Loops, and System Setup and Testing of a New Signal Installations. This program provides the student with a review of the knowledge necessary to prepare for the certification examination.



QUICK TAKE

The Traffic Signal Construction Technician Level II certification designates the holder as having a well-rounded background in traffic signal technology from seminar work and experience.

OFFERINGS

IPSI Full Program includes: Instructor, Classes, Exam, and Certification. We also have offerings for a Challenge Exam, Continuing Education, and Technical Seminars, as well as Transfer equivalent Certifications.

CERTIFICATION PROGRAM DETAILS

The Traffic Signal Construction Technician Level II certification designates the holder as having a well-rounded background in traffic signal technology from seminar work and experience. The Level II Construction certification indicates the technician has additional training on traffic signal control system construction, safety, materials, methods, and equipment. Activities covered include: safe operation of construction equipment (from concrete saws to cranes), planning activities, documentation and installation of conduits, poles, mast arms, signal heads, cabinets, and inductive loops. Setup and testing of a new signal installation will also be reviewed. The certification holder will be prepared to make a substantial contribution to the traffic signal construction group of a private firm or a public agency where new or replacement traffic signal construction is the focus.

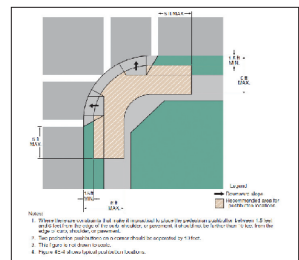
PREREQUISITES

- Work Zone Temporary Traffic Control Certification
- Traffic Signal Technician Level I Certification
- Two years experience in the traffic signal field

TRAFFIC SIGNAL DESIGN/ENGINEERING TECHNICIAN LEVEL II



The Traffic Signal Design/Engineering Level II certification program covers Traffic Data Collection, Site Inspections (prior to signal design), Traffic Signal Control System Planning, System Design, Equip-



ment Selection, Detection Design, Intersection Phasing and Timing Plans, Volume Density, Coordination Timing, Industry Standards, Theory of Operation, Project Management, and Legal/Regulatory Issues. This program provides the student with a review of the knowledge necessary to prepare for the certification examination.

QUICK TAKE

The Traffic Signal Design/Engineering Technician Level II certification indicates the holder has a thorough background in traffic signal technology from training seminars and work experience.

OFFERINGS

IPSI Full Program includes: Instructor, Classes, Exam, and Certification. We also have offerings for a Challenge Exam, Continuing Education, and Technical Seminars, as well as Transfer equivalent Certifications.

CERTIFICATION PROGRAM DETAILS

The Traffic Signal Design/Engineering Technician Level II certification indicates the holder has a thorough background in traffic signal technology from seminar work and experience. The Design/Engineering Level II certification indicates the technician has additional training on traffic signal control systems planning, design, theory of operation, and legal/regulatory issues. Areas of training include industry standards, liability and regulatory considerations, traffic data collection, site inspections (prior to signal design), detection design, intersection phasing and timing plans, volume density and coordination timing, equipment selection, and project management. The certification holder will be prepared to make a substantial contribution to the design of signalized intersections, whether employed by a private firm or a public agency, where new or replacement traffic signal planning and design is the focus.

PREREQUISITES

- Work Zone Temporary Traffic Control Certification
- Traffic Signal Technician Level I Certification
- Two years experience in the traffic signal field

TRAFFIC SIGNAL SENIOR BENCH TECHNICIAN LEVEL III



Certification Exam only.

This refresher/review seminar and Bench Technician exam is designed for the experienced Traffic Signal Bench Technician.

QUICK TAKE

The Traffic Signal Senior Bench Technician Level III certification is designed for the experienced Traffic Signal Bench Technician.

OFFERINGS

IPSI Full Program includes: Instructor, Classes, Exam, and Certification. We also have offerings for a Challenge Exam, Continuing Education, and Technical Seminars, as well as Transfer equivalent Certifications.

CERTIFICATION PROGRAM DETAILS

The Bench Technician certification consists of a 100-question exam designed for the experienced Traffic Signal Bench Technician. Topics covered in the exam include: The role of today's bench technician, test equipment, NEMA TS1 and TS2, 170, 2070 and ATC/ITS controllers and cabinets, as well as standard and optional equipment and components. The Microprocessors in Traffic Signals is a requirement of this certification, the electronics requirement for this certification is included in the exam. A review program is not offered for this certification.

PREREQUISITES

- Traffic Signal Bench Technician Level II Certification
- Microprocessors in Traffic Signals Technician Certification
- Five years experience as a Traffic Signal Bench Technician

TRAFFIC SIGNAL SENIOR FIELD TECHNICIAN LEVEL III



Certification Exam Only.

The 100-question exam associated with this certification has been prepared to test the candidate on a wide range of topics relating to field expertise and general knowledge of the applied traffic signal technologies in the field.

QUICK TAKE

The Traffic Signal Senior Field Technician Level III certification exam has been prepared to test the candidate on a wide range of topics relating to field expertise and general knowledge of the applied traffic signal technologies in the field.

OFFERINGS

IPSI Full Program includes: Instructor, Classes, Exam, and Certification. We also have offerings for a Challenge Exam, Continuing Education, and Technical Seminars, as well as Transfer equivalent Certifications.

CERTIFICATION PROGRAM DETAILS

The 100-question exam associated with this certification has been prepared to test the candidate on a wide range of topics relating to field expertise and general knowledge of the applied traffic signal technologies in the field. The following lists some of the reference materials that the potential Traffic Signals Senior Field Technician Level III must be familiar with: NEMA Standards (TS1 & TS2); 170/2070 standards; various traffic detection methods setup and configuration manuals; video detection manufacturers setup manuals; lighting protection devices; FHWA and ITE vehicle detection manuals; communications methods; MUTCD; signal head types specifications and installation methods; Wire and Cable Specifications; ITE-Traffic Engineering Manual; ITE-Traffic Control Devices Handbook; Traffic Signal preemption devices; understanding of basic electronics and electrical; US National Electrical Code and/or Canadian Electrical Code. A review program is not offered for this certification.

PREREQUISITES

- Work Zone Temporary Traffic Control Certification
- Traffic Signal Field Technician Level II Certification
- Five years experience in the traffic signal field

TRAFFIC SIGNAL INSPECTOR



The Traffic Signal Inspector certification program covers the inspection of Traffic Signal Installations. Topics include Traffic Signal Inspection including Underground Facilities, Traffic Signal Supports, Overhead Equipment, Vehicular and Pedestrian Detection Systems and the Controller Assembly, Safety Requirements, and Final Acceptance and Turn-On. This program provides the student with a review of the knowledge necessary to prepare for the certification examination.

QUICK TAKE

The Traffic Signal Inspector certification program is designed to ensure public safety by helping individuals understand fundamental concepts associated with the inspection for construction of traffic signal installations.

OFFERINGS

IPSI Full Program includes: Instructor, Classes, Exam, and Certification. We also have offerings for a Challenge Exam, Continuing Education, and Technical Seminars, as well as Transfer equivalent Certifications.

CERTIFICATION PROGRAM DETAILS

The Traffic Signal Inspector certification program is designed to ensure public safety by helping individuals understand fundamental concepts associated with the inspection for construction of traffic signal installations. Traffic signals are a key element in our transportation system and the proper operation of these signals is of paramount importance in maintaining reasonable levels of mobility. Traffic signal inspection is required to ensure that proper and specified construction practices are followed during signal installation, resulting in signals that operate as

intended. Inspection knowledge is also a key element in limiting the liability exposure of governmental agencies associated with malfunctioning traffic signals.

Traffic Signal Inspector certification is recommended for all individuals involved in the inspection of traffic signal construction. It is also a valuable course for contractor personnel, since it provides an inspector's viewpoint of traffic signal construction.

Topics covered in the Traffic Signal Inspector certification program include:

- Introduction to traffic signal inspection
- Inspection of underground facilities
- Inspection of traffic signal supports
- Inspection of overhead equipment
- Inspection of conduit and cable
- Inspection of vehicular and pedestrian detection systems
- Inspection of the controller assembly
- Safety requirements
- Final acceptance and turn-on

PREREQUISITES

- Work Zone Temporary Traffic Control Certification
- Traffic Signal Technician Level I Certification

TRAFFIC SIGNAL INSPECTOR FOR ADVANCED TECHNOLOGIES



The Traffic Signal Inspector Advanced Technologies certification program builds on knowledge and skills discussed in the Traffic Signal Inspector Level I certification

program. This program includes the areas of Test Equipment, Control Components, Power Systems, Foundations, Poles and Supports, Intersection Wiring, Detection Systems, Phasing and Timing, Intelligent Transportation System (ITS) Devices, Network Equipment, Communication Methods and Installation, and Safety Procedures (OSHA). This program provides the student with a review of the knowledge necessary to prepare for the certification examination.



QUICK TAKE

Individuals who are responsible for the inspection of advanced traffic control and Intelligent Transportation Systems and seek an advanced level of professional certification will benefit by taking this program.

OFFERINGS

IPSI Full Program includes: Instructor, Classes, Exam, and Certification. We also have offerings for a Challenge Exam, Continuing Education, and Technical Seminars, as well as Transfer equivalent Certifications.

CERTIFICATION PROGRAM DETAILS

Topics covered in this program include:

- Traffic signal phasing and timing of traffic signals
- Test equipment and procedures
- Control components, power systems
- Foundations, intersection wiring
- Detection systems
- Intelligent Transportation Systems (ITS) devices
- Communications

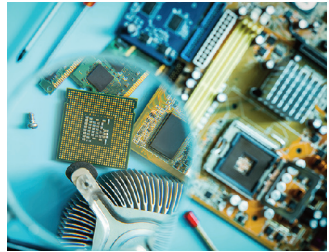
PREREQUISITES

- Work Zone Temporary Traffic Control Technician Certification
- Traffic Signal Technician Level I Certification
- Traffic Signal Inspector Certification

ELECTRONICS IN TRAFFIC SIGNAL TECHNICIAN



The Electronics in Traffic Signal Technician certification program includes DC Electrical Fundamentals, Voltage, Current, Circuits, Source Resistance, Power, AC Circuit principles, Capacitance and Inductance, Impedance, Resonance and Transformers, Simple Filters, Semiconductor Electronics, Semiconductor Devices, Semiconductor Circuits, and a Glossary. This program provides the student with a review of the knowledge necessary to prepare for the certification examination.



QUICK TAKE

The Electronics in Traffic Signal Technician is a course of study of electronics as it pertains to traffic signal equipment.

OFFERINGS

IPSI Full Program includes: Instructor, Classes, Exam, and Certification. We also have offerings for a Challenge Exam, Continuing Education, and Technical Seminars, as well as Transfer equivalent Certifications.

CERTIFICATION PROGRAM DETAILS

The Electronics in Traffic Signal Technician is a course of study of electronics as it pertains to traffic signal equipment. The course includes evaluating quizzes, review of electrical fundamentals, introduction of semiconductors and their electrical behavior, semiconductor devices found in traffic signal controllers, and discussion of actual semiconductor circuits encountered in traffic signal equipment.

Additional subjects covered in the course are fundamentals of Direct Current (DC), Resistance, Power, Capacitance and Inductance, fundamentals of Alternating Current (AC), Inductance, Impedance, Resonance and Transformers, basics of Semiconductor Electronics, Semiconductor Devices, Semiconductor Circuits, Amplifiers, Gates, and Timers. Each subject area contains a brief quiz.

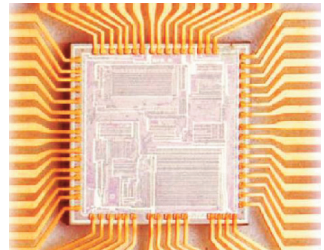
PREREQUISITES

None

MICROPROCESSORS IN TRAFFIC SIGNALS TECHNICIAN



The Microprocessors in Traffic Signals Technician certification program covers the History of the Microprocessor, Number Systems and Computer Arithmetic, Review of Boolean algebra, Review of Integrated Circuits, Architecture of Microprocessors, Memory, Basics of Operation, Input and Output, Programming,



and Troubleshooting. This program provides the student with a review of the knowledge necessary to prepare for the certification examination.

QUICK TAKE

The Microprocessor in Traffic Signals course presents the basics of microprocessors and their applications as they apply to traffic control devices.

OFFERINGS

IPSI Full Program includes: Instructor, Classes, Exam, and Certification. We also have offerings for a Challenge Exam, Continuing Education, and Technical Seminars, as well as Transfer equivalent Certifications.

CERTIFICATION PROGRAM DETAILS

The Microprocessor in Traffic Signals course presents the basics of microprocessors and their applications as they apply to traffic control devices and discusses the architecture, operation, and programming aspects of microprocessors. In some material presented on the input and output devices pertaining to traffic control, only the chips and devices that are directly connected to the circuitry are discussed. Load switches, power supplies, detection devices, and signal heads are considered, but only as inputs or outputs to the microprocessor. The student is expected to have previous knowledge of these devices and has had a digital logic course or is familiar with the binary number system, gates, flip flops, timers, and counters, obtained from course work, and field experience.

PREREQUISITES

None

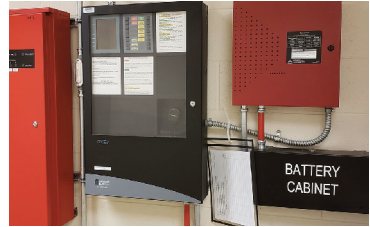
FIRE ALARM

IPSI offers certification review programs to prepare you for the certification examinations for Interior Fire Alarm Technician Level I and Level II, Public Emergency Reporting Systems Technician Level I and Level II, and Fire Alarm Monitoring Technician.

INTERIOR FIRE ALARM TECHNICIAN LEVEL I



The Interior Fire Alarm Level I certification program includes the review of Fire Detection and Systems, Understanding Drawings and Specifications, Electrical Theory, Fire Alarm Wiring and Alarm System Design, Understanding Blueprints and Specifications, Inspection and Testing Techniques and a Glossary of Terms. This program provides the student with a review of the knowledge necessary to prepare for the certification examination.



QUICK TAKE

This Interior Fire Alarm Technician Level I program will review the basics that are required in your job for the personal and professional growth you desire.

OFFERINGS

IPSI Full Program includes: Instructor, Classes, Exam, and Certification. We also have offerings for a Challenge Exam, Continuing Education, and Technical Seminars, as well as Transfer equivalent Certifications.

CERTIFICATION PROGRAM DETAILS

This Interior Fire Alarm Technician Level I program will review the basics that are required in your job for the personal and professional growth you desire. Through this program, you will enhance your knowledge of fire detection and alarm systems, design drawings, electrical alarm theory and inspection and testing systems; further the development and professionalism in the industry; promote the need for public safety; and be better prepared to face the next level in the Fire Alarm Certification Program.

This program will review:

- Fire detection and alarm systems
- Understanding drawings and specifications
- Electrical theory and fire alarm wiring
- Inspection and testing techniques

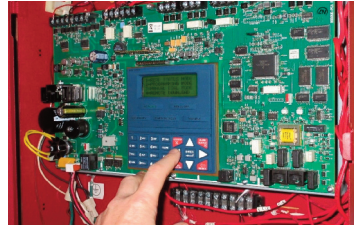
PREREQUISITES

- One year of relevant work experience.

INTERIOR FIRE ALARM TECHNICIAN LEVEL II



The Interior Fire Alarm Technician Level II certification program reviews topics including Codes, Standards, and System Design, Suppression Systems and Connections, Emergency



Communications Systems, Emergency Control Functions and System Performance Requirements, Computers Used for Fire Alarm Programming and Computer Aided Design and Drafting (CADD) and Public Emergency Alarm Reporting Systems and Supervising Stations. This program provides the student with a review of the knowledge necessary to prepare for the certification examination.

QUICK TAKE

The objectives of the Interior Fire Alarm Technician Level II Certification program are to assure compliance with the latest standards and technologies for the installation and maintenance of critical fire detection and alerting systems for the protection of life and property.

OFFERINGS

IPSI Full Program includes: Instructor, Classes, Exam, and Certification. We also have offerings for a Challenge Exam, Continuing Education, and Technical Seminars, as well as Transfer equivalent Certifications.

CERTIFICATION PROGRAM DETAILS

The objectives of the Interior Fire Alarm Technician Level II Certification program are to assist governmental agencies and private companies to reduce the incidence of unnecessary and false alarms that are presently plaguing them; and to increase the quality of fire alarm maintenance and code enforcement personnel.

This program will review:

- Codes, standards, and system design
- Suppression systems and connections
- Emergency communications systems, emergency control functions, and system performance requirements
- Computers used for fire alarm programming and computer aided design and drafting (CADD)
- Public emergency alarm reporting systems and supervising stations

PREREQUISITES

- Fire Alarm Technician Level I Certification
- Two years of relevant work experience.

PUBLIC EMERGENCY REPORTING SYSTEMS TECHNICIAN LEVEL I



The Public Emergency Reporting Systems Level I certification program covers Public Emergency Alarm Reporting Systems, also known as municipal fire alarm systems. Topics

include Basic Electricity and the Volt Ohm Meter, Safety and Liability, Overview of Public Emergency Alarm Reporting Systems, and Wiring and Line Construction. This program provides the student with a review of the knowledge necessary to prepare for the certification examination.



QUICK TAKE

This Public Emergency Alarm Reporting Systems Level I program will cover what you need to know to prepare for entry level certification of your knowledge of these lifesaving systems.

OFFERINGS

IPSI Full Program includes: Instructor, Classes, Exam, and Certification. We also have offerings for a Challenge Exam, Continuing Education, and Technical Seminars, as well as Transfer equivalent Certifications.

CERTIFICATION PROGRAM DETAILS

This two-day Public Emergency Alarm Reporting Systems Level I program will cover the basics of systems designed to allow direct emergency notification to first responders. Level I certification will demonstrate your ability to install and maintain public alarm reporting systems while preparing you for the Level II credential.

In this program you will review:

- Basic Electricity and the VOM
- Safety and Liability
- Overview of Public Emergency Alarm Reporting Systems
- Wiring and Line Construction
- Introduction to Wireless Systems

PREREQUISITES

- One year of relevant work experience.

PUBLIC EMERGENCY REPORTING SYSTEMS TECHNICIAN LEVEL II



The Public Emergency Reporting Systems Level II certification program expands on the Level I program including Fire Alarm Auxiliary Reporting Systems, Public Reporting Cabling,

Understanding Fire Alarm Circuit Wiring & Fire Alarm Boxes, Wired Public Emergency Alarm Reporting Systems and Wireless Public Emergency Alarm Reporting Systems. This program provides the student with a review of the knowledge necessary to prepare for the certification examination.



QUICK TAKE

This Public Emergency Alarm Reporting Systems Level II program will expand your knowledge of these lifesaving systems as you prepare for this advanced certification credential.

OFFERINGS

IPSI Full Program includes: Instructor, Classes, Exam, and Certification. We also have offerings for a Challenge Exam, Continuing Education, and Technical Seminars, as well as Transfer equivalent Certifications.

CERTIFICATION PROGRAM DETAILS

This Public Emergency Alarm Reporting Systems Level II program will cover the advanced technologies of systems designed to allow direct emergency notification to first responders. A Level II certification credential will demonstrate your advanced level of knowledge and expertise of both wired and wireless public alarm reporting systems.

In this program you will review:

- Public Emergency Alarm Reporting Systems Cabling
- Understanding Fire Alarm Circuit Wiring & Reporting Devices
- Wired Public Emergency Alarm Reporting Systems
- Wireless Public Emergency Alarm Reporting Systems

PREREQUISITES

- Public Emergency Alarm Reporting Systems Level I Certification
- Two years or field experience with Public Emergency Alarm Reporting Systems

FIRE ALARM MONITORING TECHNICIAN



The Fire Alarm Monitoring Technician certification program includes a comprehensive review of General Supervising Station Requirements, Supervising Station Fire Alarm Systems, Public Fire Alarm Reporting Systems, Public Fire Alarm Monitoring System Requirements and Communication Methods and Requirements. This two day program provides the student with a review of the knowledge necessary to prepare for the certification examination.

QUICK TAKE

This seminar is designed to give an overview of alarm receiving equipment for remote supervising stations, central stations, and public fire alarm reporting systems.

OFFERINGS

IPSI Full Program includes: Instructor, Classes, Exam, and Certification. We also have offerings for a Challenge Exam, Continuing Education, and Technical Seminars, as well as Transfer equivalent Certifications.

CERTIFICATION PROGRAM DETAILS

This seminar is designed to give an overview of alarm receiving equipment for remote supervising stations, central stations, and public fire alarm reporting systems.

Individuals will review:

- General supervising station and public fire alarm monitoring system requirements
- Supervising station fire alarm systems
- Communication methods and requirements
- Public fire alarm reporting systems

PREREQUISITES

None

WORK ZONE SAFETY

IPSI offers certification review programs to prepare you for the certification examinations for Work Zone Temporary Traffic Control Technician, Michigan Temporary Traffic Control Technician, and Canadian Work Zone Traffic Control Safety.

WORK ZONE TEMPORARY TRAFFIC CONTROL TECHNICIAN



The Work Zone Temporary Traffic Control certification program covers the Principles of Design, Installation and Maintenance of Temporary Traffic Control Devices and identifies Standards. The general principles outlined in this program are applicable to both Rural and Urban applications featuring Part 6, Temporary Traffic Control from the FHWA Certification program on Uniform Traffic Control Devices (MUTCD). This program provides the student with a review of the knowledge necessary to prepare for the certification examination.

QUICK TAKE

This is an entry-level seminar to review basic and advanced methods of Temporary Traffic Control in Work Zones.

OFFERINGS

IPSI Full Program includes: Instructor, Classes, Exam, and Certification. We also have offerings for a Challenge Exam, Continuing Education, and Technical Seminars, as well as Transfer equivalent Certifications.

CERTIFICATION PROGRAM DETAILS

This is an entry-level seminar to review basic and advanced methods of Temporary Traffic Control in Work Zones. This course reviews principles for the design, installation, and maintenance of traffic control devices and identifies applicable standards for common urban, rural, and freeway situations. You will review traffic control theory and devices, hand signaling devices, typical situations for construction, and traffic terminology. Problems of traffic control may occur when traffic must be moved through

or around road or street construction, maintenance operations, utility work, and incidents on or adjacent to the roadway. This two-day seminar establishes principles to be observed in the design, installation, and maintenance of traffic control devices, and identifies standards where applicable. The general principles outlined are applicable to both rural and urban situations.

You will review:

- Guidelines for using traffic control devices.
- Typical situations for construction
- Traffic terminology
- Work zone temporary traffic control and safety review notes
- State and/or local design standards

The Work Zone Temporary Traffic Control Technician program is based on the MUTCD.

PREREQUISITES

- None
- This certification is a prerequisite for:
 - Roadway Lighting
 - Signs and Pavement Markings
 - Traffic Signal Technician Programs

MICHIGAN TEMPORARY TRAFFIC CONTROL TECHNICIAN



The Michigan Temporary Traffic Control Technician (MMTC) certification program covers the Michigan DOT requirements to be a Traffic Regulator. MTTC deals specifically with the



requirements of the Certification program on Uniform Traffic Control Devices, Part 6, the MMUTCD and the Authority, Obligation and Training of Traffic Regulators, the Proper Use of Traffic Control Devices, Procedures, MiOSHA Requirements, Safety Apparel and General Traffic Safety Highlighting Requirements for Signing and Special Traffic Regulator Operations including Single and Intermediate Traffic Regulator, Haul Road Operations and the use of police officers. This program provides the student

with a review of the knowledge necessary to prepare for the certification examination.

QUICK TAKE

The Michigan Temporary Traffic Control Technician (MMTC) certification program covers the Michigan DOT requirements to be a Traffic Regulator.

OFFERINGS

IPSI Full Program includes: Instructor, Classes, Exam, and Certification. We also have offerings for a Challenge Exam, Continuing Education, and Technical Seminars, as well as Transfer equivalent Certifications.

CERTIFICATION PROGRAM DETAILS

The Traffic Signal Inspector — Florida certification program includes an Introduction to Traffic Signal Inspection, Safety Requirements, Inspection of Underground Facilities, Conduit and Cable, Signal Supports, Signal Indications & Overhead Equipment, Inspection of the Detection System, Controller Assemblies, Final Acceptance and Turn on and FDOT Requirements.

This program provides the student with a review of the knowledge necessary to prepare for the certification examination.

PREREQUISITES

None

CANADIAN WORK ZONE TRAFFIC CONTROL SAFETY



The Canadian Work Zone Traffic Control Safety Certification program covers Certification Programs, Standards and Principles, Liability and Responsibility, Temporary Traffic Control Devices, Traffic Control Person (TCP) Control. Temporary Traffic Control Elements, Typical Worksites, Traffic Control for Construction Projects, and annex material including Inspection Checklists, Tables and Fig-



ures, Traffic Terminology and Traffic Control Devices Summary. This program provides the student with a review of the knowledge necessary to prepare for the certification examination.

QUICK TAKE

The Canadian Work Zone Traffic Control Safety Certification program covers Certification Programs, Standards and Principles, Liability and Responsibility, Temporary Traffic Control Devices, Traffic Control Person (TCP) Control. Temporary Traffic Control Elements, Typical Worksites, Traffic Control for Construction Projects, and annex material including Inspection Checklists, Tables and Figures, Traffic Terminology, and Traffic Control Devices Summary.

OFFERINGS

IPSI Full Program includes: Instructor, Classes, Exam, and Certification. We also have offerings for a Challenge Exam, Continuing Education, and Technical Seminars, as well as Transfer equivalent Certifications.

CERTIFICATION PROGRAM DETAILS

The Canadian Work Zone Traffic Control Safety Certification program covers Certification Programs, Standards and Principles, Liability and Responsibility, Temporary Traffic Control Devices, Traffic Control Person (TCP) Control. Temporary Traffic Control Elements, Typical Worksites, Traffic Control for Construction Projects, and annex material including Inspection Checklists, Tables and Figures, Traffic Terminology and Traffic Control Devices Summary.

This two day program provides the student with a review of the knowledge necessary to prepare for the certification examination.

PREREQUISITES

None

TRANSPORTATION CENTER

IPSI offers certification review programs to prepare you for the certification examinations for Transportation Center System Specialist Level I and Level II.

TRANSPORTATION CENTER SYSTEM SPECIALIST LEVEL I



The Transportation Center System Specialist Level I certification program is produced for transportation professionals whose role encompasses control and operation of a road network in a Transportation Management Center (TMC). It includes material on Data Collection, Automatic Incident Detection, Telecommunications, Sub-systems, Video, Operations and Control, Network Topology and Security, Wired and Wireless Physical Plant, Computer Aided Dispatching and Analysis/Reporting. This program provides the student with a review of the knowledge necessary to prepare for the certification examination.

QUICK TAKE

This certification program is designed for transportation professionals whose role encompasses control and operation of a road network in a Transportation Management Center (TMC).

OFFERINGS

IPSI Full Program includes: Instructor, Classes, Exam, and Certification. We also have offerings for a Challenge Exam, Continuing Education, and Technical Seminars, as well as Transfer equivalent Certifications.

CERTIFICATION PROGRAM DETAILS

The program provides an understanding of key concepts and the technology used for devices, equipment, and software that a TMC may utilize in daily operations. It includes material on data collection, manual and automatic incident detection, telecommunications, sub-systems, video, operations and control, network topology and security, wired and wireless physical plant, computer aided dispatching and analysis/reporting.

This certification program is intended for practitioners that install, maintain equipment used in and/or directly or indirectly operate transportation management centers.

PREREQUISITES

None

TRANSPORTATION CENTER SYSTEM SPECIALIST LEVEL II



The Transportation Center System Specialist (TCSS) Level II certification program continues and expands on the information contained in the Level I program with



an advanced review of the Concepts, Technology and Operational Techniques for Devices, Equipment, and Software that a TMC may utilize in daily operations. Subjects include Data Collection, Vehicle Detection, Data Integrity and Integration, Center-To-Center Protocols, TMC Consoles, Video and Closed Circuit Television Technologies, Stand by Power Systems, Software Sub-Systems, Dynamic Message Signs, Field Device Operations and System Administration and Troubleshooting. This program provides the student with a review of the knowledge necessary to prepare for the certification examination.

QUICK TAKE

The Transportation Center System Specialist (TCSS) Level II certification program continues and expands on the knowledge and skill sets gained in the Level I program with an advanced review of the concepts, technology and operational techniques for devices, equipment, and software that a TMC may utilize in daily operations.

OFFERINGS

IPSI Full Program includes: Instructor, Classes, Exam, and Certification. We also have offerings for a Challenge Exam, Continuing Education, and Technical Seminars, as well as Transfer equivalent Certifications.

CERTIFICATION PROGRAM DETAILS

The Transportation Center System Specialist (TCSS) Level II certification program continues and expands on the knowledge and skill sets gained in the Level I program with an advanced review of the concepts, technology and operational techniques for devices, equipment, and software that a TMC may utilize in daily operations. This program emphasizes material on data collection, vehicle detection, data integrity and integration, Center-To-Center protocols, TMC consoles, video and closed circuit television technologies, stand by power systems, software subsystems, dynamic message signs, field device operations and system administration and troubleshooting.

This certification program is intended for individuals that have achieved the Transportation Center System Specialist Level I certification whose role and responsibilities may require a higher level of knowledge and be more supervisory.

PREREQUISITES

- Transportation Center System Specialist Level I Certification

ROADWAY LIGHTING

IPSI offers certification review programs to prepare you for the certification examinations for Roadway Lighting Technician Level I and Level II.

ROADWAY LIGHTING TECHNICIAN LEVEL I



The Roadway Lighting Technician Level I certification program covers the fundamental knowledge and skill sets required for individuals working on Roadway Lighting. The subject areas include Electrical

Safety and Codes, Basic Electricity, Laws, Jurisdictional Requirements, Basic Construction and Maintenance, Safety and Qualifications, Energy Efficiency, Lamp and Luminaire Components, Electrical Service, Poles and High Mast Components, Basic Lighting Design Fundamentals, Lighting Applications, Maintenance, Testing, Investigation and Troubleshooting and Reference Documents. This program provides the student with a review of the knowledge necessary to prepare for the certification examination.



QUICK TAKE

The Roadway Lighting Technician Level I Certification program for qualified personnel is designed to cover the fundamental knowledge and skill sets required for individuals working on Roadway Lighting.

OFFERINGS

IPSI Full Program includes: Instructor, Classes, Exam, and Certification. We also have offerings for a Challenge Exam, Continuing Education, and Technical Seminars, as well as Transfer equivalent Certifications.

CERTIFICATION PROGRAM DETAILS

The Roadway Lighting Technician Level I Certification program for qualified personnel is designed to cover the fundamental knowledge and skill sets required for individuals working on Roadway Lighting. The review material will address electrical

safety and codes, basic electricity, laws, jurisdictional requirements and basic construction and maintenance.

Additional material covered in the program consists of:

- Safety and Qualifications
- Energy Efficiency
- Lamp and Luminaire Components
- Electrical Service, Poles and High Mast Components
- Basic Lighting Design Fundamentals
- Lighting Applications
- Maintenance of Systems
- Reference Documents
- Testing, Investigation and Troubleshooting

This program is intended for those responsible for the installation and maintenance of roadway lighting who seek professional certification.

PREREQUISITES

- Work Zone Temporary Traffic Control Technician

ROADWAY LIGHTING TECHNICIAN LEVEL II



The Roadway Lighting Technician Level II certification program contains information to build upon the fundamentals of the Level I program covering an advanced level of knowledge for Roadway Lighting Design, Installation, Management and Maintenance, Electrical requirements, Structural and Construction Requirements, Roadway Lighting Inspection, Inspection of Underground Facilities, Inspection of Poles, Overhead Equipment, Control Systems, Lighting Design Calculations and Reference Documents. This program provides the student with a review of the knowledge necessary to prepare for the certification examination.



QUICK TAKE

The Roadway Lighting Technician Level II review is an advanced certification program that is designed to build upon the fundamentals of the roadway Lighting Level I program.

OFFERINGS

IPSI Full Program includes: Instructor, Classes, Exam, and Certification. We also have offerings for a Challenge Exam, Continuing Education, and Technical Seminars, as well as Transfer equivalent Certifications.

CERTIFICATION PROGRAM DETAILS

The Roadway Lighting Technician Level II is an advanced certification program that is designed to build upon the fundamentals of the Roadway Lighting Level I program. The Level II program covers an advanced level of knowledge and skill sets required specifically for roadway lighting design, installation, management and maintenance.

The review material covered in this program is:

- Roadway Lighting Design
- Electrical Requirements
- Structural and Construction Requirements
- Roadway Lighting Inspection
- Inspection of Underground Facilities
- Inspection of Poles
- Inspection of Overhead Equipment
- Roadway Lighting Control Systems
- Lighting Design Calculations
- Maintenance and Management
- Reference Documents

This program is intended for those responsible for the design, installation, management and maintenance of roadway lighting who seek an advanced level of professional certification.

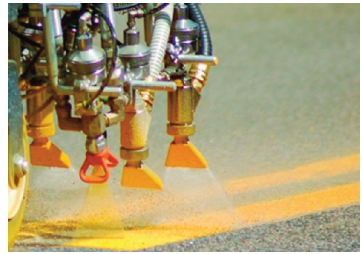
PREREQUISITES

- Work Zone Temporary Traffic Control Technician
- Roadway Lighting Technician Level I
- Two years of roadway lighting field experience.

SIGNS & PAVEMENT MARKINGS

IPSI offers certification review programs to prepare you for the certification examinations for Signs and Pavement Markings Technician Level I, Signs Technician Level II and Pavement Markings Technician Level II.

SIGNS AND PAVEMENT MARKINGS TECHNICIAN LEVEL I



The Signs & Pavement Markings certification program covers the latest technologies, materials, and rules and regulations for the installation and maintenance of signs and pavement markings on today's roadways. Accepted industry standards and practices are covered in detail including the Certification Program on Uniform Traffic Control Devices (MUTCD) and how to use it, the various Types of Signs and Pavement Markings, their application and how they interact with one another. Additional subjects include Tort and Risk Liability, Work Zone Safety, School Zones, Bike Lanes, Equipment Maintenance, Asset Management, Visibility and Retroreflectivity and Environmental Safety. This program provides the student with a review of the knowledge necessary to prepare for the certification examination.

QUICK TAKE

This certification program provides an introduction to the latest technology, materials and rules and regulations that are used for the installation and maintenance of signs and pavement markings on today's roadways.

OFFERINGS

IPSI Full Program includes: Instructor, Classes, Exam, and Certification. We also have offerings for a Challenge Exam, Continuing Education, and Technical Seminars, as well as Transfer equivalent Certifications.

CERTIFICATION PROGRAM DETAILS

This certification program provides an introduction to the latest technology, materials and rules and regulations that are used for the installation and maintenance of signs and pavement markings on today's roadways. Accepted industry standards and practices are covered in detail such as the Manual On Uniform Traffic Control Devices (MUTCD) and how to use it, the various types of signs and pavement markings, and their application and how they interact with one another. Additional subject matter includes tort and risk liability, work zone safety, school zones, bike lanes, equipment maintenance, asset management, visibility and retro-reflectivity and environmental safety.

This program is intended for those responsible for the installation and maintenance of signs and/or pavement markings on our roadways.

PREREQUISITES

- Work Zone Temporary Traffic Control Certification
- One year of signs and/or pavement markings experience

SIGNS TECHNICIAN LEVEL II



The Signs Technician Level II manual contains advanced information designed to build upon the fundamental information contained in the Signs & Markings Level I manual. The Level II manual covers an advanced



level of knowledge required specifically for Sign design, Installation and Maintenance. Based on the requirements of the Manual on Uniform Traffic Control Devices (MUTCD) and other references the manual includes When and where these traffic control devices are installed, How to properly manufacture, install and maintain them, Sign requirements for freeways and expressways, Speed zones, Non-traditional toll managed lanes, Guide signs, General and special warning signs, Street name signs, Route markers and routes signs and Design and location considerations.

QUICK TAKE

The Signs Technician Level II is an advanced certification program that is designed to build upon the fundamentals of the Signs & Markings Level I program.

OFFERINGS

IPSI Full Program includes: Instructor, Classes, Exam, and Certification. We also have offerings for a Challenge Exam, Continuing Education, and Technical Seminars, as well as Transfer equivalent Certifications.

CERTIFICATION PROGRAM DETAILS

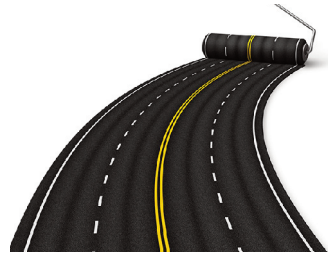
The Signs Technician Level II is an advanced certification program that is designed to build upon the fundamentals of the Signs & Markings Level I program. The Level II program covers an advanced level of knowledge and skill sets required specifically for sign design, installation and maintenance. In this program the sign technician will expand his/her understanding of the criteria for the application of signs in accordance with the MUTCD and other references. Topics covered are when and where these traffic control devices are installed, how to properly manufacture, install and maintain them. Additional subject matter includes sign requirements for freeways and expressways, speed zones, non-traditional toll managed lanes, guide signs, general and special warning signs, street name signs, route markers and route signs and design and location considerations. The program also emphasizes the role of and increased responsibility that comes with Level II Signs Technician certification.

This program is intended for those responsible for the installation and maintenance of signs on our roadways and seek an advanced level of professional certification.

PREREQUISITES

- Work Zone Temporary Traffic Control Certification
- Signs and Pavement Markings Technician Level I Certification
- Two years of signs experience

PAVEMENT MARKINGS TECHNICIAN LEVEL II



The Pavement Markings Technician Level II certification program contains advanced information to build upon the information contained in the Level I program including Pavement Marking Design, Installation and Maintenance, When and Where these Devices are Installed, How to Properly Install and Maintain them, Material Safety, Pavement Marking Visibility, Retroreflectivity, Freeway and Expressway Markings and Colors, Patterns and Widths Application Standards and an Overview of Marking Materials. This program provides the student with a review of the knowledge necessary to prepare for the certification examination.

QUICK TAKE

The Pavement Markings Technician Level II is an advanced certification program that is designed to build upon the fundamentals of the Signs & Markings Level I program.

OFFERINGS

IPSI Full Program includes: Instructor, Classes, Exam, and Certification. We also have offerings for a Challenge Exam, Continuing Education, and Technical Seminars, as well as Transfer equivalent Certifications.

CERTIFICATION PROGRAM DETAILS

The Pavement Markings Technician Level II is an advanced certification program that is designed to build upon the fundamentals of the Signs & Markings Level I program. The Level II program covers an advanced level of knowledge and skill sets required specifically for pavement marking design, installation and maintenance. This Level II program will allow the Pavement Markings Technician to garner greater insight and an advanced understanding of pavement marking materials, installation and maintenance. It will also expand their knowledge of the criteria for the application of pavement markings in accordance with the MUTCD and other references. Topics covered are when and where these traffic control devices are installed, how to properly install and maintain them, material safety, pavement markings visibility, retroreflectivity, freeway and expressway markings, and

colors, patterns and widths application standards. An in depth overview of all of the various marking materials and the technology behind them is also provided. The program also emphasizes the role of and increased responsibility that comes with Level II Pavement Markings Technician certification.

This program is intended for those responsible for the installation and maintenance of pavement markings on our roadways and seek an advanced level of professional certification.

PREREQUISITES

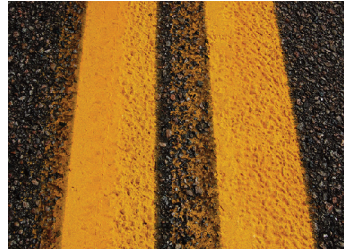
- Work Zone Temporary Traffic Control Certification
- Signs and Pavement Markings Technician Level I Certification
- Two years of pavement markings experience

PAVEMENT MARKINGS SENIOR TECHNICIAN LEVEL III



Certification exam only.

This certification program provides an introduction to the latest technology, materials and rules and regulations that are used for the installation and maintenance of signs and pavement markings on today's roadways.



QUICK TAKE

Pavement Markings Senior Technician Level III certification is the highest level of certification for pavement markings personnel.

OFFERINGS

IPSI Full Program includes: Instructor, Classes, Exam, and Certification. We also have offerings for a Challenge Exam, Continuing Education, and Technical Seminars, as well as Transfer equivalent Certifications.

CERTIFICATION PROGRAM DETAILS

Pavement Markings Senior Technician Level III certification is the highest level of certification for pavement markings personnel. It consists of an examination that is designed to test the

knowledge and skill sets that are specifically required for pavement markings design, installation and maintenance. This certification is intended for personnel who may be in a supervisory role and/or responsible for the design, installation and maintenance of pavement markings on our roadways.

PREREQUISITES

- Work Zone Temporary Traffic Control Certification
- Pavement Markings Technician Level II Certification
- Five years of related field experience

SIGNS SENIOR TECHNICIAN LEVEL III



Certification exam only.

Signs Senior Technician Level III is the highest level of professional certification for sign personnel. It consists of an examination that is designed to test the knowledge and skill sets that are specifically required for sign design, installation and maintenance.



QUICK TAKE

Signs Senior Technician Level III is the highest level of professional certification for sign personnel.

OFFERINGS

IPSI Full Program includes: Instructor, Classes, Exam, and Certification. We also have offerings for a Challenge Exam, Continuing Education, and Technical Seminars, as well as Transfer equivalent Certifications.

CERTIFICATION PROGRAM DETAILS

Signs Senior Technician Level III is the highest level of professional certification for sign personnel. It consists of an examination that is designed to test the knowledge and skill sets that are specifically required for sign design, installation, and maintenance.

This certification is intended for personnel who may be in a supervisory role and/or responsible for the design, installation and maintenance of signs on our roadways.

PREREQUISITES

- Work Zone Temporary Traffic Control Certification
- Signs Technician Level II Certification
- Five years of field experience related to the design, installation and maintenance of signs

EDUCATIONAL METHODOLOGY

IPSI offers training to assist instructors with their program presentations.

EDUCATIONAL METHODOLOGY



The Educational Methodology program is designed to assist instructors with their course presentations. Subjects include The Adult Learner, Lesson Plans, The Effective Instructor, The Classroom Environment, Media, Educational Activities and Participant Evaluation.



QUICK TAKE

The Educational Methodology program is designed to assist instructors with their course presentations.

OFFERINGS

IPSI Full Program includes: Instructor, Classes, Exam, and Certification. We also have offerings for a Challenge Exam, Continuing Education, and Technical Seminars, as well as Transfer equivalent Certifications.

CERTIFICATION PROGRAM DETAILS

The Educational Methodology program is designed to assist instructors with their course presentations. Subjects include The Adult Learner, Lesson Plans, The Effective Instructor, The Classroom Environment, Media, Educational Activities and Participant Evaluation.

PREREQUISITES

None

